



Project Location:
Chicago, IL
Completion Date:
2006

Distributor: Bricks, Inc., Chicago
Architect:
Solomon Cordwell Buenz, Chicago

General Contractor:
Power Construction
Mason Contractor:
Ceisel Masonry



Solomon Cordwell Buenz was commissioned to design the newest Loyola University Residence Hall located at 26 East Pearson in the heart of Chicago. During the design phases an idea was conceived that a special shaped brick would be a feasible solution for a unique typical window condition. This shape would not only have an offset slot but also a recessed plane and two different textures.

This was clearly a job for Interstate Brick. The purpose of the scratch texture on the setback portion of the unit is to accentuate the reveal by

Loyola University Residence Hall

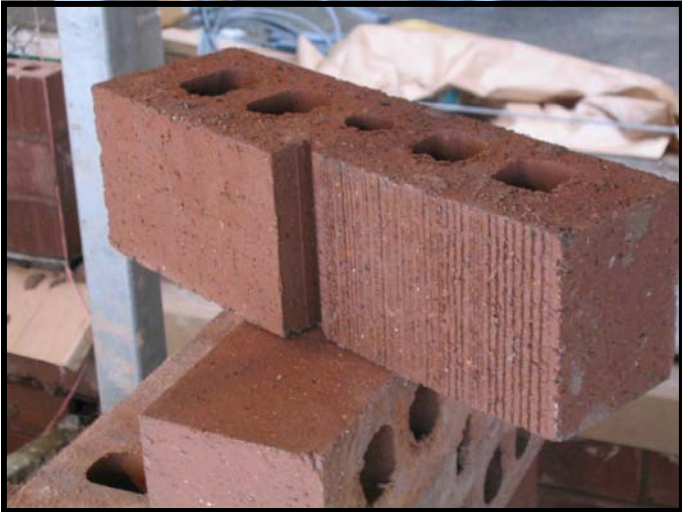
appearing to be a darker color. Adding a special shape brick brings a unique detail to the overall appearance of the project. In this case, an articulated frame is created around the windows while emphasizing the vertical expression to the high rise building. In a masonry industry that is becoming scruti-

Shapes are cost effective!

nized as to the construction and safety of the building façades, durability and quality are as equally important as economy. Experts in the field have become more conservative in their recommendations to ensure the owner's of permanence while minimizing maintenance and safety issues. The Loyola Water Tower Campus Student Dormitory takes incorporates these issues into an aesthetically pleasing façade. This special brick shape provides the design detail envisioned while maintaining a sound bond coursing. In addition, an econ-



omy is realized by the mason laying one 12" long unit in lieu of two 6" long units, thereby having half of the movements and less mortar. If this shape weren't available, the masons would have two different units on the scaffolding, and likely take twice the time to install them. The concerns of modern construction do not need to negate detail and expression in architecture. Working with the contractors and the manufactures, architects can solve the issues while providing an elegant façade.



Shapes are more expensive than typical brick sizes. Yet, they can contribute to lower total project costs in many ways. In the case of Loyola, the shape eliminated the need for several masons cutting brick and guessing as to the setback distance. Labor cost is the biggest part of the masonry wall cost equation.

Project Particulars:

Brick sizes used:

3.5 Emperors™, Utilities, Utility special shapes

Special shapes:

4x4x12 with 1/2" setback and texture change at 6"

Brick colors used:

Bronzestone matte and scratch

Net waste:

2.5% or 10,500 units

Total unit quantity:

395,000 stretchers, 9,000 shapes

Note this:

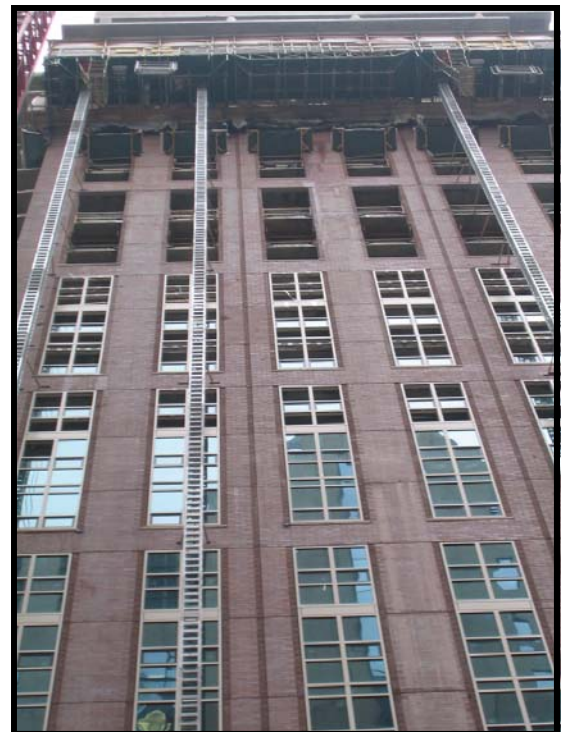
Drainage is not compromised by this shape because the brick is not cut and pushed back into the cavity, thereby collecting mortar droppings.

Total brick wall area:

174,194 SF

Total project floor area:

250,000 SF/25 stories



We're on the Web!

9780 South 5200 West
West Jordan, UT

84088-5689

(800) 233.8654

(801) 280.5220 Facsimile

www.InterstateBrick.com

When Interstate Brick was formed in 1891 we established one simple goal for our company: to be the best brick manufacturer in America. Today the attainment of that goal can be seen in a variety of premier brick products from veneer to structural which are often being imitated but never duplicated by other national manufacturers. Interstate Brick continues to grace the most sophisticated schools, office buildings, condominium towers, malls, federal buildings and residential homes from coast to coast. This goes to show what a difference one simple goal can make. Simply put, nothing else stacks up.



Nothing else Stacks Up!