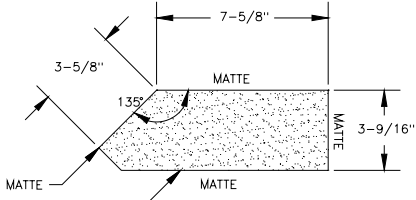
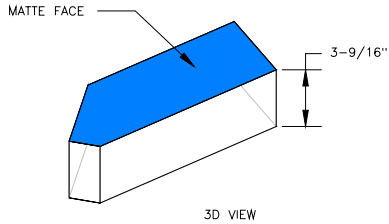


| | | |
|-----------------------|--|---|
| DIFFICULTY RATING: | | CUSTOMER SIGNATURE INDICATES APPROVAL OF SHAPE AS SHOWN AND AGREEMENT TO PURCHASE ALL SHAPES ORDERED AND EQUIPMENT AS INDICATED ON PURCHASE ORDER. |
| STRETCHER: | | |
| PRODUCT CODE: | | SURFACES NOT DESIGNATED AS FACES MAY OR MAY NOT BE SOLID AT MANUFACTURERS OPTION IN ORDER TO REDUCE COST. CORING MAY VARY |
| YARD SERVICES CHARGE: | | |
| SHAPER CAP CHARGE: | | |
| SPECIAL EQUIP: | | |
| CUST APPRV: | | |
| PLANT APPRV: | | |




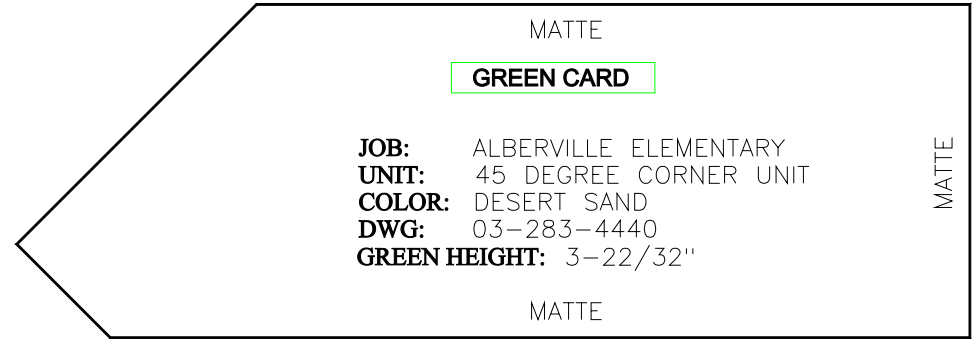
CUSTOMER NOTE: THIS FACE WILL BE DIFFERENT DUE TO CONTACT WITH BELT AFTER EXTRUSION.

NOTE: THIS UNIT IS SOLID



3D VIEW

| | | |
|--|-----------------|-------------------------------------|
|  INTERSTATE BRICK ENGINEERING DEPARTMENT WEST JORDAN, UTAH | | <i>"Nothing Else Stacks Up"</i> |
| CUST: | | |
| JOB: | | DATE: 7/31/03 |
| UNIT: | 45° CORNER UNIT | |
| COLOR: | | |
| SIZE: | 3-1/2" NORMAN | |
| QTY: | | NM3916_135degsplaysolid |



JOB: ALBERVILLE ELEMENTARY
UNIT: 45 DEGREE CORNER UNIT
COLOR: DESERT SAND
DWG: 03-283-4440
GREEN HEIGHT: 3-22/32"

Demo Version